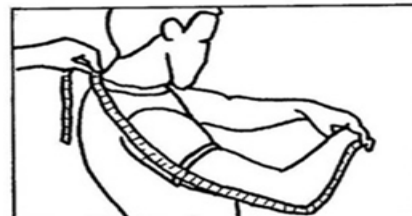
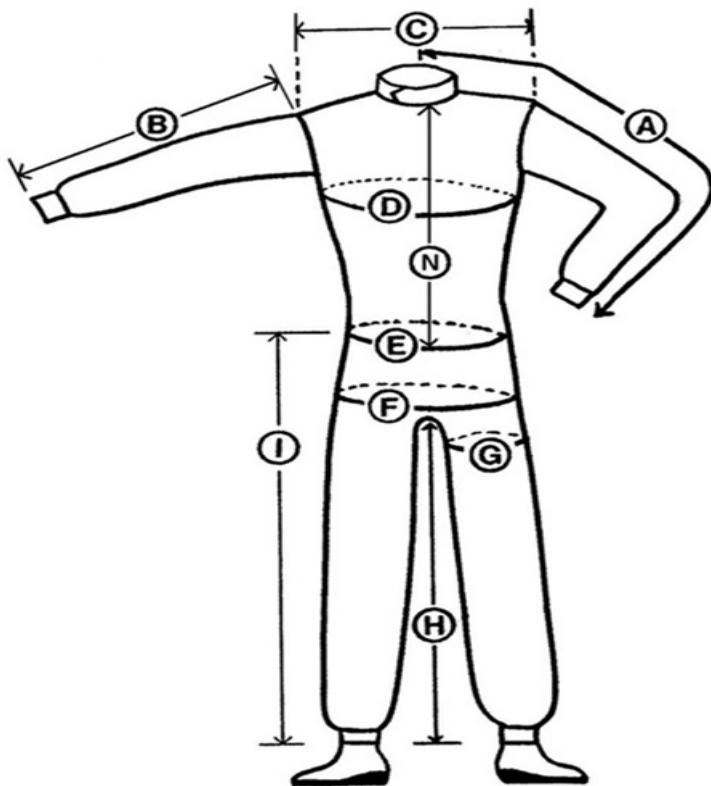


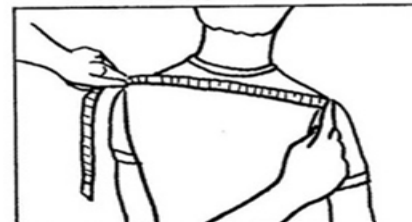
# CHICANE CUSTOM FIT FORM *FAX +64 (0)9 5800561*

- Please take all the measurements requested on this form carefully and precisely.
- Stand erect, ask a tailor or someone to help measure you with a fabric tape.
- The measurements should be taken wearing your normal clothing.
- Do not allow for any tolerances and ensure all pockets are empty.
- Height is from the prominent bone at the base of the neck on the back.
- Measure waist and crotch from the same point, the top of your trousers.

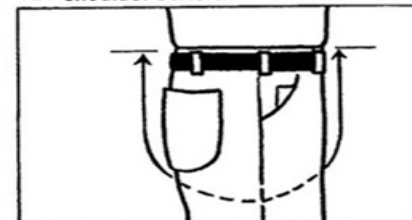
<b>A</b>	.....	Centre of collar with arm bent <i>Diagram A</i>
<b>B</b>	.....	Sleeve (straight arm to cuff)
<b>C</b>	.....	Shoulder width (sleeve to sleeve) <i>Diagram C</i>
<b>D</b>	.....	Chest circumference (directly under arms)
<b>E</b>	.....	Waist circumference
<b>F</b>	.....	Hip circumference
<b>G</b>	.....	Thigh circumference (with leg raised)
<b>H</b>	.....	Crotch or Groin to ankle bone (inside leg)
<b>I</b>	.....	Waist to ankle bone (outside leg)
<b>J</b>	.....	Crotch (from front to back of waist) <i>Diagram J</i>
<b>K</b>	.....	Back height (neck to waist / belt)
<b>L</b>	.....	Height (back of neck to ankle bone)
<b>M</b>	.....	Neck circumference
<b>N</b>	.....	Centre Front (neck to waist / belt)



**A** Sleeve - Measure from prominent bone at base of neck behind bent elbow to wrist, with arms forward.



**C** Shoulder - Measure across back shoulder bone to shoulder bone.



**J** Crotch - Measure from front of waist through crotch to back of waist.